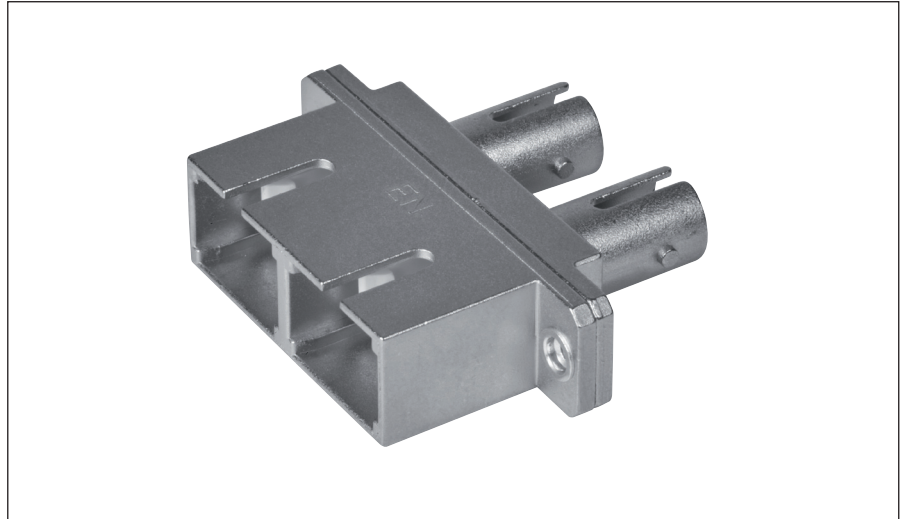


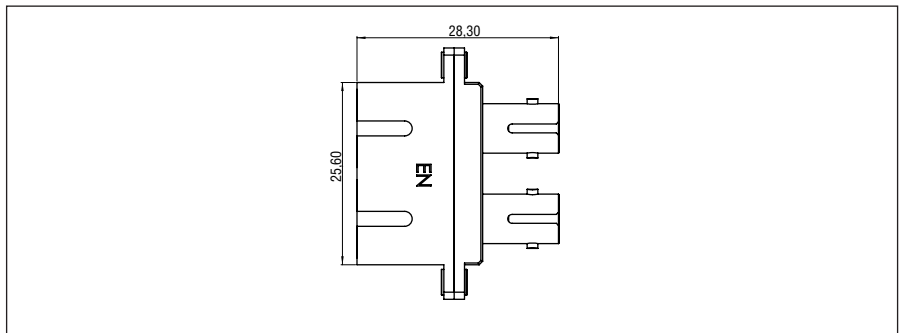
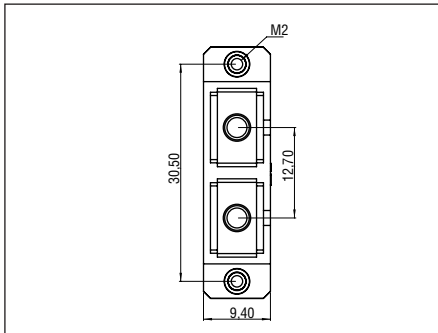
SC-ST[®] Duplex-Adaptor

Features

- Flange mount 2 hole
- 2 bolts M2x6 attached
- Extreme mechanical stability



Dimensions



Technical Data

Part number	HDK1-SCST-M25M	HDK1-SCST-K25M	HDK2-SCST-K25S
Description	Multimode	Multimode	Singlemode
Typical loss	≤ 0.2 dB	≤ 0.15 dB	≤ 0.1 dB
Housing material / colour of interior	metal / beige	metal / beige	metal / blue
Mating cycles	500	2.000	2.000
Material sleeve	phosphor-bronze, split	ZrO ₂ , split	ZrO ₂ , split
Operating temperature	-40 °C – +85 °C		
Storage temperature	-40 °C – +90 °C		
Fixing	2-hole-flange		