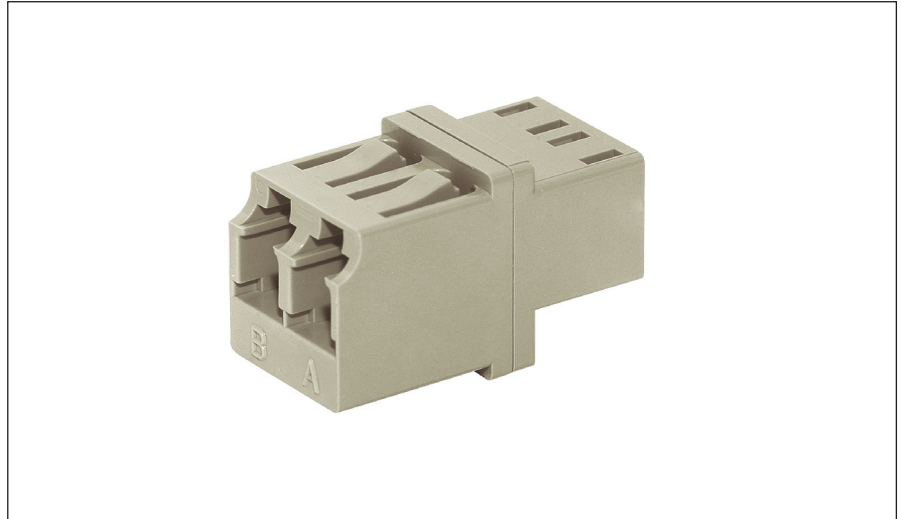


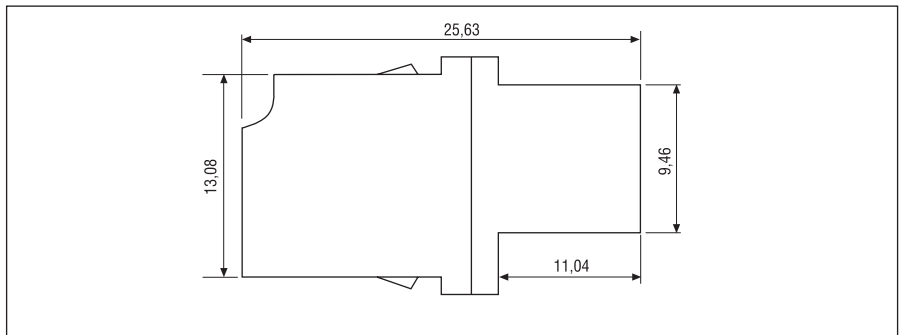
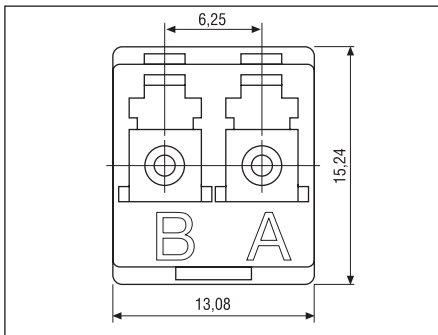
LC-Duplex-Adaptor

Features

- Fixing with clip



Dimensions



Technical Data

Part number	LDK1-1313-M12M	LDK2-1313-K12S
Description	Multimode	Singlemode
Housing material / colour	plastic / beige	plastic / blue
Typical loss	≤ 0.2 dB	≤ 0.1 dB
Mating cycles	500	1.000
Material sleeve	phosphor-bronze, split	ZrO ₂ , split
Operating temperature	-40 °C – +85 °C	
Storage temperature	-40 °C – +90 °C	
Fixing	Clip	
Notes: Simplex-adaptors upon request!		